



# AUTO OPEN

---

## Accessory Fitting Instructions

This document contains the instructions for the Auto Open accessory system designed for use with all DG1 gates.

## **INFORMATION YOU MUST TAKE HEED OF**

- When fitting this accessory disconnect the battery prior to starting.
- The wires are colour coded and wires should only be fixed to wires of the same colour.
- The blue wire is the earth wire and should be connected first to its opposite blue wire.
- Double check all terminals have been properly tightened and hold the wire properly. Double check all wires match the same colour wire they are connected to.
- **PLEASE NOTE – WHEN THE GATE IS TURNED ON FROM THE SWITCH INSIDE THE CABINET MAKE SURE NOTHING IS PARKED IN FRONT OF THE AUTO OPEN BOX**

## **WHAT YOUR DELIVERY CONTAINS**

The box contains an enclosure with two IR sensors attached along with a length of 7 cables

ASSISTANCE – please see our website under the useful info section for video instruction of fitting your Dofygate.

## SAFETY INFORMATION

### General Warnings and Precautions



**Do not** remove the plastic covers from the gate arm unless the gate is turned off



**Do not** remove the gate from the gate holder unless the gate has been turned off.



**Do not** remove or change the battery unless the gate has been turned off.



**Do not** connect the battery to a mains charger while the battery is connected to the gate



If **horses** are to pass through the gate such that the gate is opened in front of the horse then the horse should be kept back from but in view of the gate the first time it comes across the gate. Once introduced the horse will treat the gate as any other everyday object.

## **Environmental conditions that may affect use**

**Temperature** – The accessory is suitable for temperatures in the range of -15 deg C to 40 deg C. In frosty conditions where ice has formed on the sensor the gate may not close or may close after a longer than normal delay. In either case normal operation is resumed if the sensor face is wiped,

**Rainfall** – Heavy rain may cause the IR to think it sees an obstruction in which case the gate may not close or may close after a longer than normal delay. In either case normal operation is resumed if the sensor face is wiped.

**Wind** – Wind will not affect this product nor change the way the gate BEHAVES.

**Sunshine** – All exterior components are UV stabilised or unaffected by sunshine. If the sensor is positioned so that it points directly towards the sun then the sensor will activate and prevent closure. In this case twist the sensor slightly to avoid this situation.

## **Contents**

**These are the Original Instructions for Dofygate DG1 Unit intended for use in retaining stock within a stock yard or within field. Or controlling traffic entering a property.**

### **Table of contents**

- 1.0 Assistance**
- 2.0 Accessories**
- 3.0 Assembly**
- 4.0 Disposal**

## 1.0 Assistance Information

Sales 01522 500600  
Technical help 01603 493102  
Out of hours help 07785 352730  
E Mail [admin@dofygate.co.uk](mailto:admin@dofygate.co.uk)

For operational information including tuning in fobs or pairing gates then please try our web page [www.dofygate.co.uk](http://www.dofygate.co.uk) and go to 'useful information' tab.

Dofygate Ltd is located at Manor Farm,  
Calthorpe,  
Norwich.  
NR11 7QR

## 2.0 Other Accessories

- Extra fob – Can be tuned in to any gate
- Extra post fixing – allows the gate to be relocated easily
- Energiser for stock control
- 4 bar height extension – necessary to contain animals
- Battery – 7.0 amp hour lead acid AGM Gel battery
- Charger – 700ma
- Automatic closing – uses 2 infra red sensors to safely close the gate automatically following an open command from a fob or other device
- Call 2 Open – Must be used with auto close
- Keypad – Must be used with auto close
- Auto open – gate responds to vehicle stopped near device.
- Timed closure.

### 3.0 Assembly instructions.

**Order of assembly if this unit purchased with new gate and auto close.**

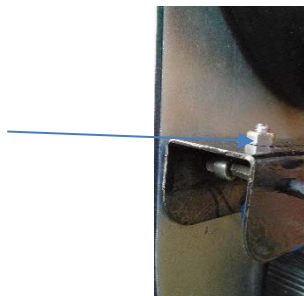
1. **Fit gate**
2. **Fit auto close as instructed making sure the IR sensor mounted on the arm is on the same side as the auto close unit will be. If a keypad is on the other side then this is on the right as you look OUT of or EXIT the property.**
3. **Fit the auto open**

#### Fitting Auto open

Mount the enclosure on a post so that the IR sensors are 700 mm from the ground. The sensors should be in line with the gate post holding the gate.



Fit the Reed switch to the IR bar fixed to the gate



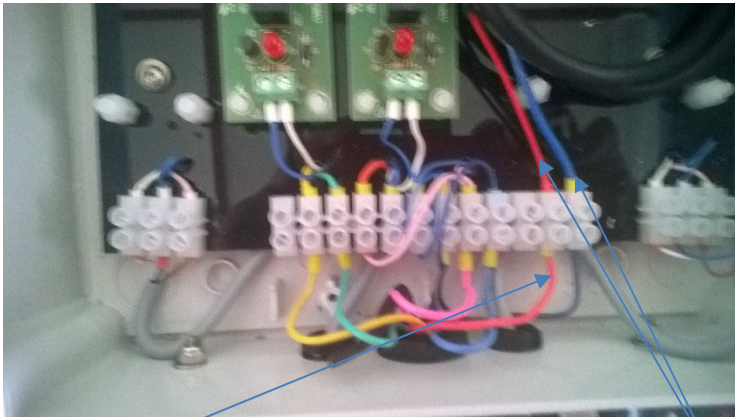
Take the wires from the reed switch back under the IR holder and into the junction box via the gland used to allow entry of the IR sensor. Attach the pink and Red wires as shown

The reed switch provides a switched supply to the Auto open.

If the red wire is present wire it in. If the red wire is not present then ignore the red wire.



Install the gland to allow entry for the 7 core cable link to the Auto open box. Wire as shown matching colours. Blue is common earth and can be fixed to either of the terminals with a blue wire on the other side.



If the red wire is present wire it in. If the red wire is not present then ignore the red wire. The two wires to the right serve another accessory which is not included in the Auto open set up.



### The process

- The sensors under the Auto open enclosure are what opens the gate.
- One is on all the time. If that sensor sees something it turns the other sensor on.
- If the second sensor sees something at the same time then the gate is instructed to open.
- To prevent false signals and allow the auto process to work the Auto open box is turned off during the opening process.
- This accomplished by the reed switch mounted on the IR bar and that reed switch is activated by the magnet located under the D shaped cover.
- As soon as the gate closes the auto open is re-activated.

**PLEASE NOTE – WHEN THE GATE IS TURNED ON FROM THE SWITCH INSIDE THE CABINET MAKE SURE NOTHING IS PARKED IN FRONT OF THE AUTO OPEN BOX**

## **4.0 Disposal**

This accessory contains wiring and plastics. As a unit it should be disposed of as an electrical item. The item should not be disposed of with general waste.